



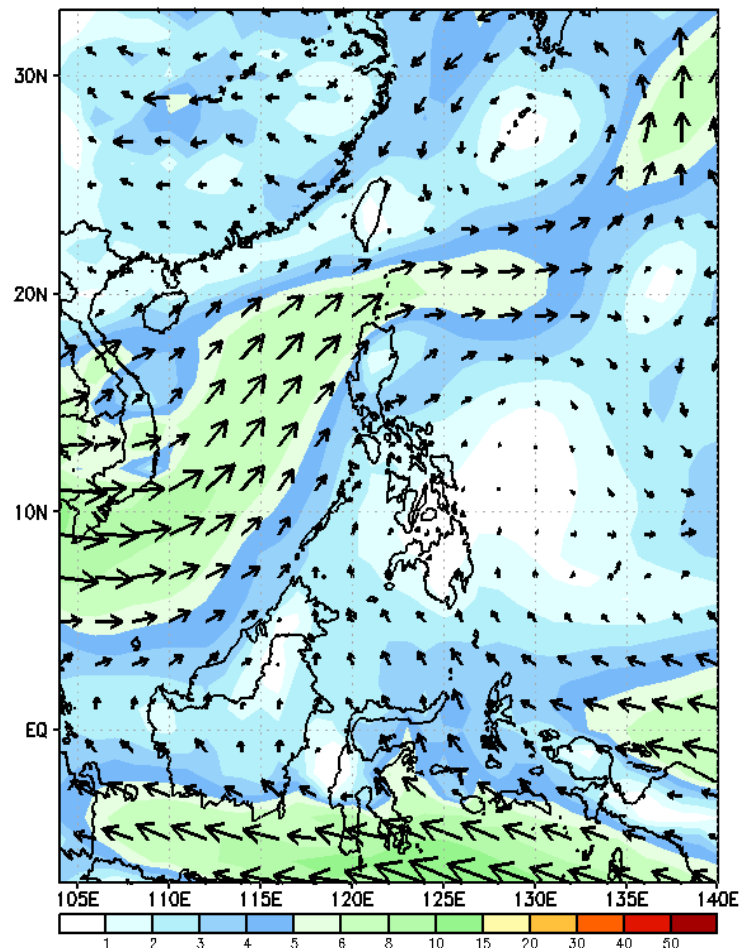
Week 1 & Week 2 Forecast for the Philippines using GEFS Model



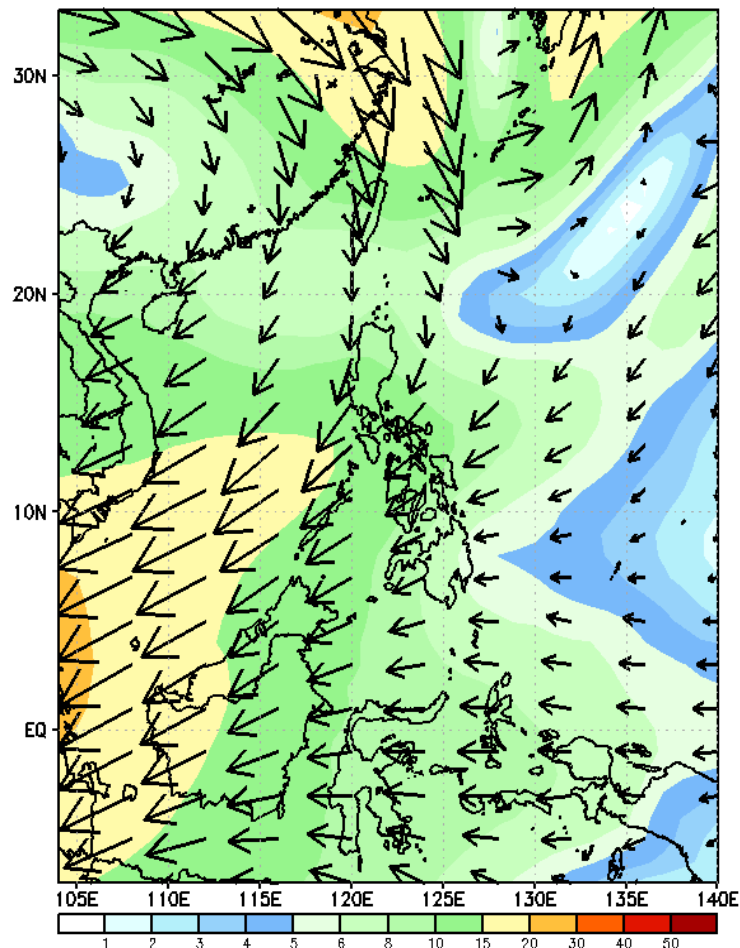
GEFS Week-1 Forecasts: Wind Forecast

Week 1: : Sep 6-12, 2023

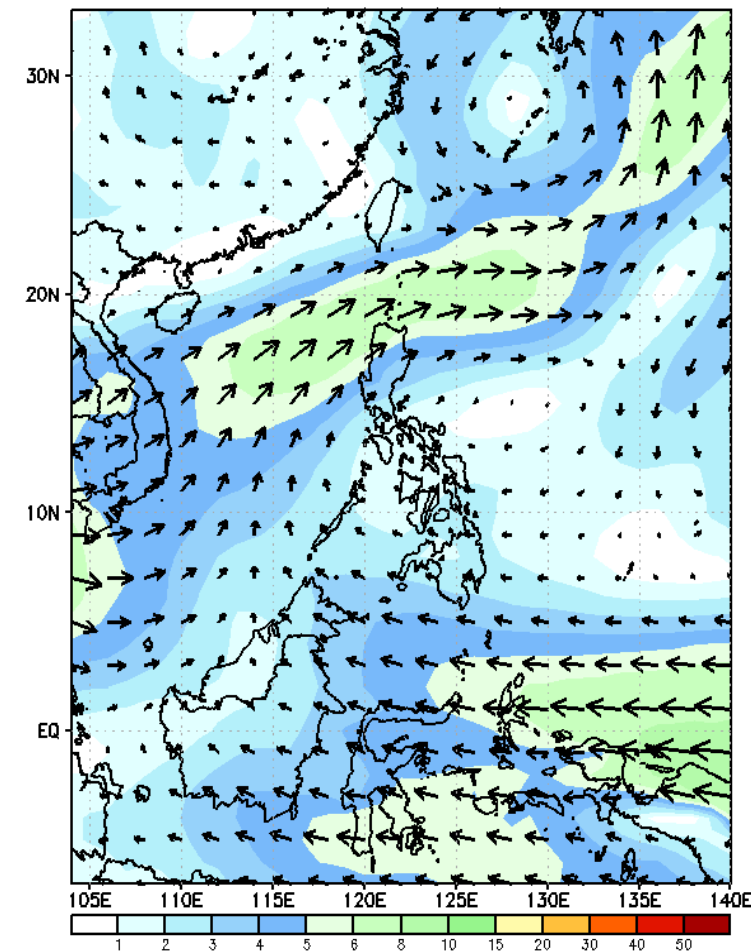
GEFS Week-1 850-hPa Wind Total
Valid: 20230906 - 20230912



GEFS Week-1 200-hPa Wind Total
Valid: 20230906 - 20230912



GEFS Week-1 700-hPa Wind Total
Valid: 20230906 - 20230912



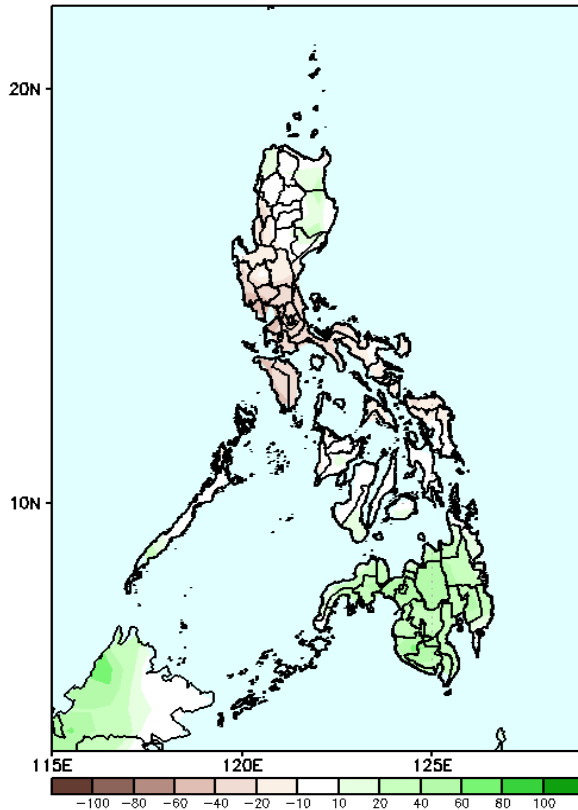
Southwest Monsoon is forecasted to affect the western sections of Northern and Central Luzon.
Easterlies affecting Visayas and Mindanao.

Precipitation Anomaly and Exceedance Probability > 25/50 mm



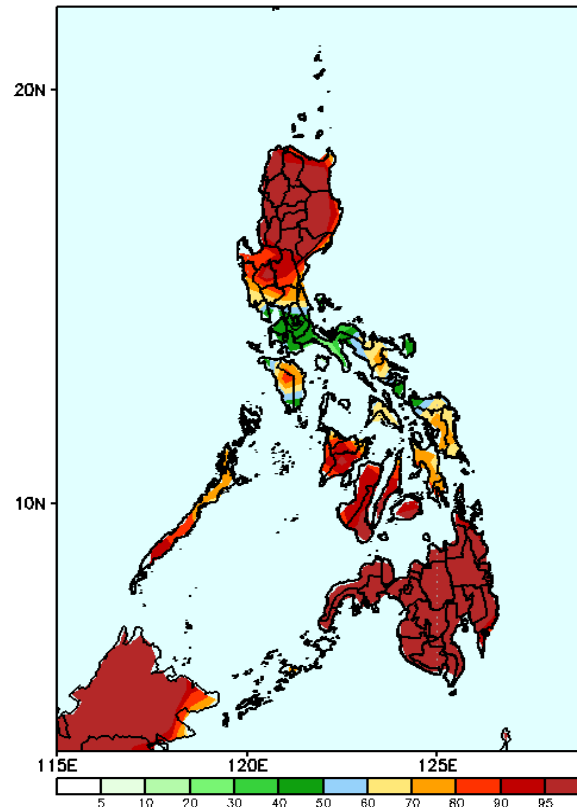
Week 1: : Sep 6-12, 2023

GEFS Week-1 Precip Anomaly
Valid: 20230906 – 20230912



Rainfall deficit of more than 100mm is expected in Mt. Province, Ifugao and Mindoro and 20-80mm for the rest of the country except in Ilocos Region, western part of Central Luzon and southern Mindanao where 20-50mm increase of rainfall is more likely.

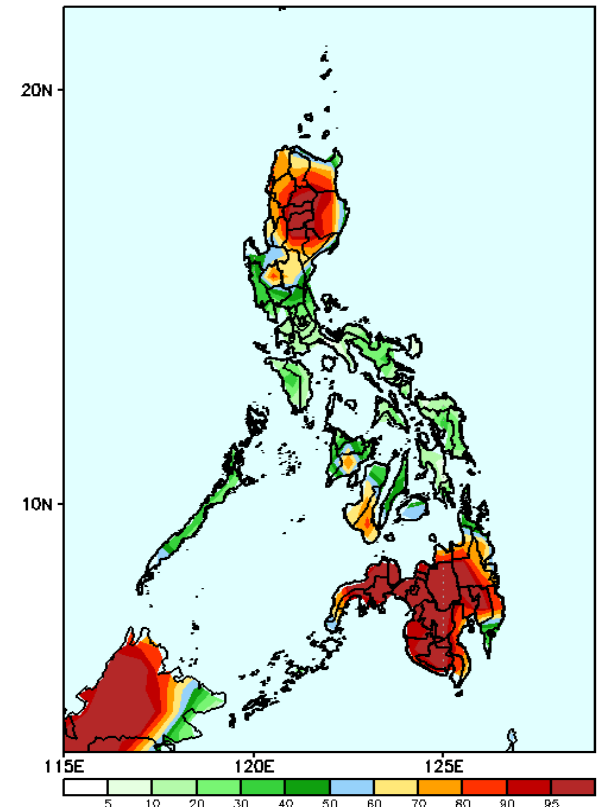
GEFS Week-1 Exceedance Prob. > 25mm
Valid: 20230906 – 20230912



Probability to Exceed 25mm

- High to very high in most parts of Northern and Central Luzon, Palawan, Western and Central Visayas, and Mindanao.
- Moderate to high over the rest of the country.

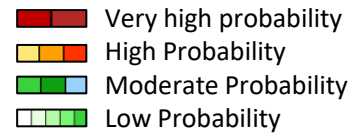
GEFS Week-1 Exceedance Prob. > 50mm
Valid: 20230906 – 20230912



Probability to Exceed 50mm

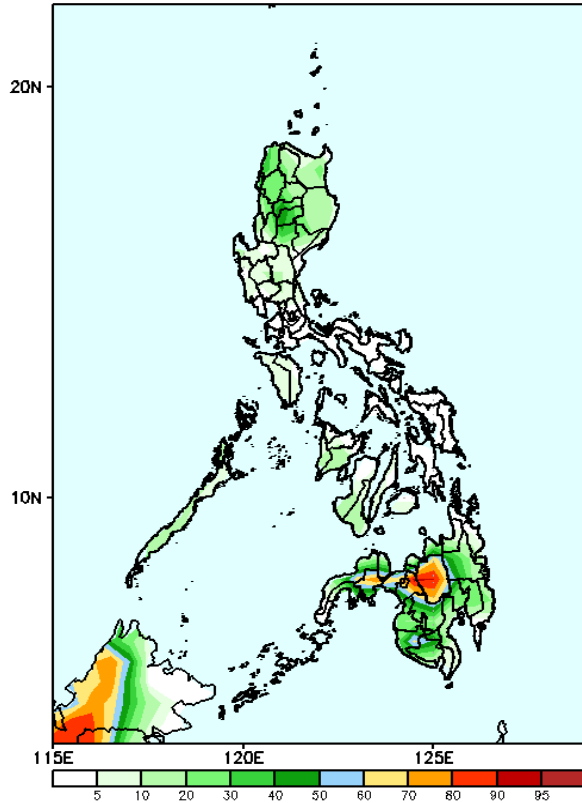
- High to very high in most parts of Northern Luzon and Mindanao.
- Moderate to high in Central Luzon and Dinagat Island, Surigao del Norte, Davao de Oro, and Western and Central Visayas.
- Low to moderate over the rest of the country.

Exceedance Probability > 100/150/200 mm



Week 1: : Sep 6-12, 2023

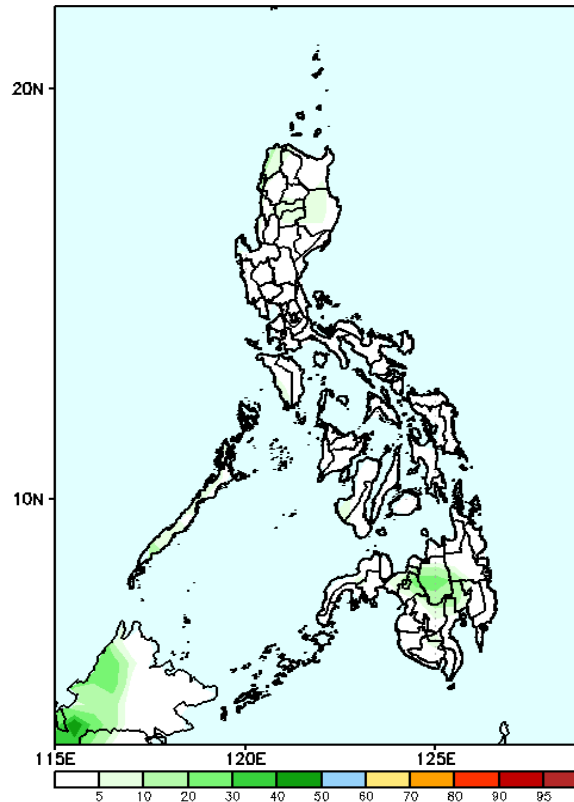
GEFS Week-1 Exceedance Prob. > 100mm
Valid: 20230906 - 20230912



Probability to Exceed 100mm

- Moderate to high over Bukidnon, Zamboanga del Sur, Cotabato, and Lanao provinces;
- Low over the rest of the country.

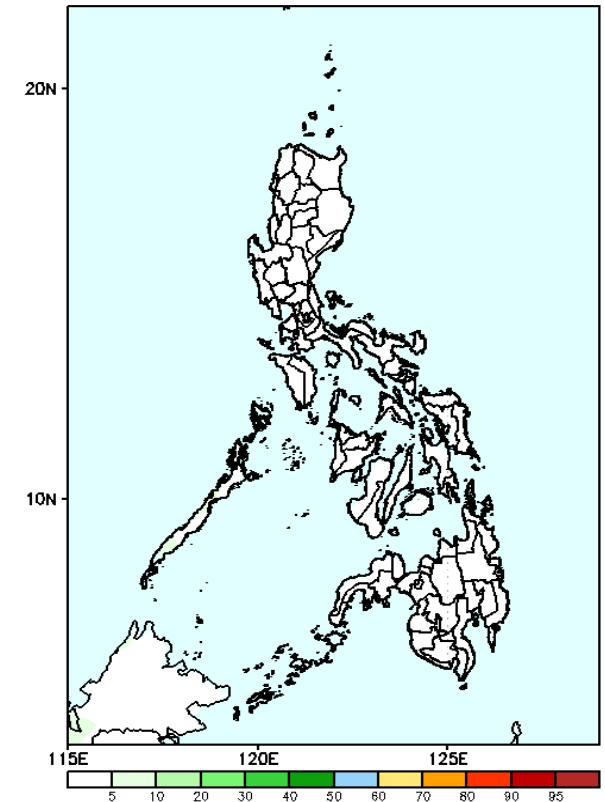
GEFS Week-1 Exceedance Prob. > 150mm
Valid: 20230906 - 20230912



Probability to Exceed 150mm

- Low in most parts of the country.

GEFS Week-1 Exceedance Prob. > 200mm
Valid: 20230906 - 20230912



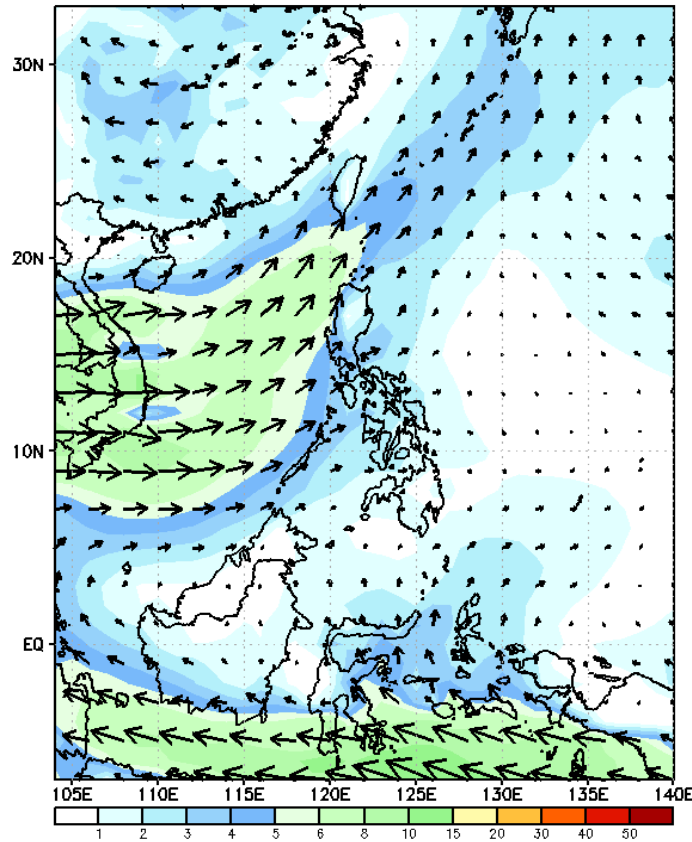
Probability to Exceed 200mm

- Low in most parts of the country.

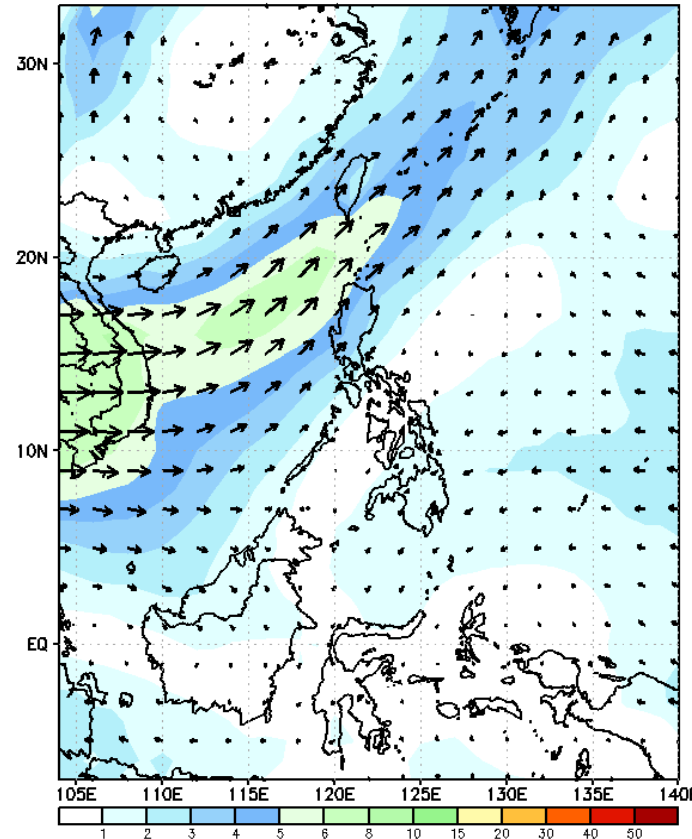
GEFS Week-2 Forecasts: Wind Forecast

Week 2: Sep 13-19, 2023

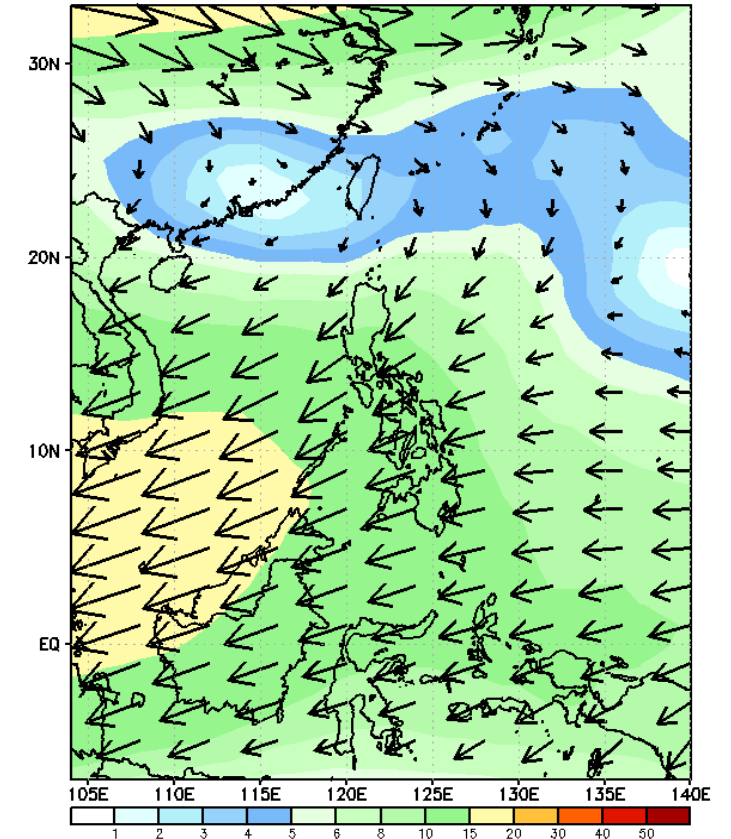
GEFS Week-2 850-hPa Wind Total
Valid: 20230913 - 20230919



GEFS Week-2 700-hPa Wind Total
Valid: 20230913 - 20230919



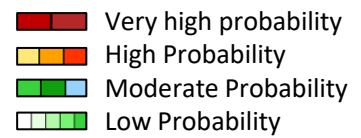
GEFS Week-2 200-hPa Wind Total
Valid: 20230913 - 20230919



Weak Southwest Monsoon is forecasted to affect the western sections of Northern and Central Luzon.
Easterlies affecting Visayas and Mindanao.

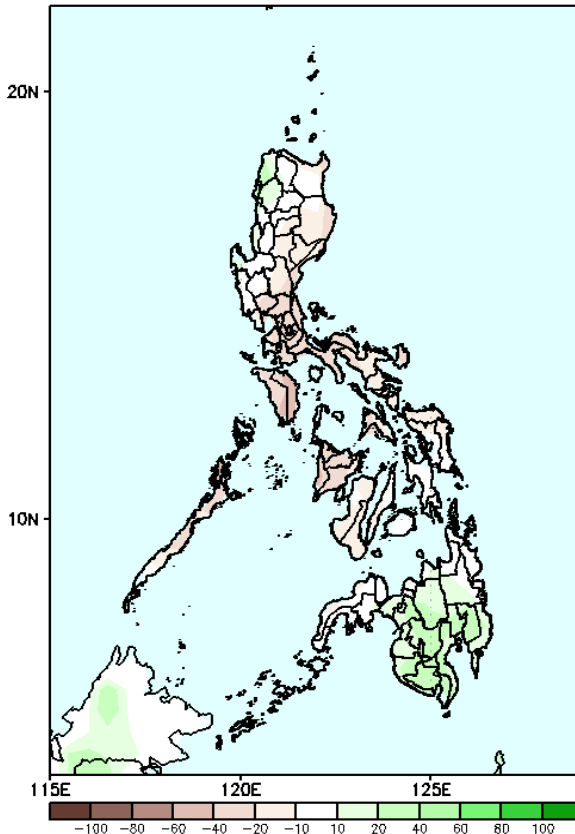


Precipitation Anomaly and Exceedance Probability > 25/50 mm



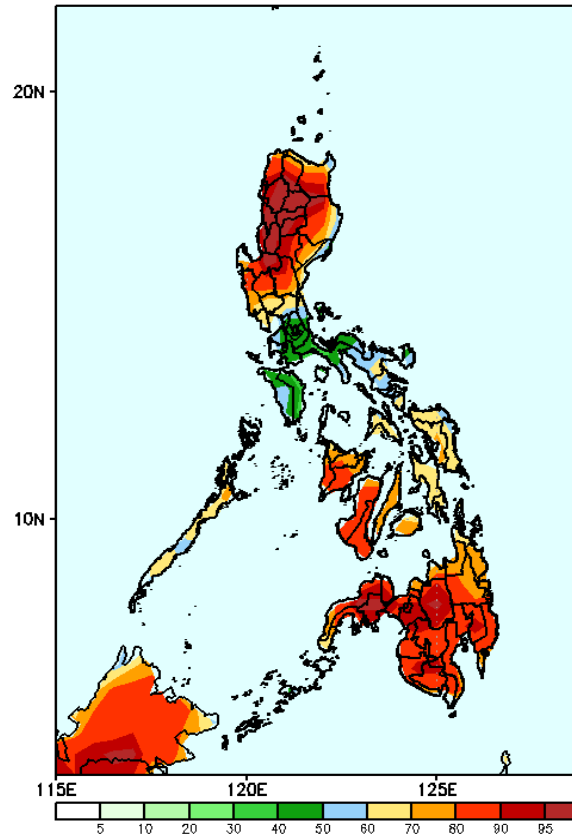
Week 2: Sep 13-19, 2023

GEFS Week-2 Precip Anomaly
Valid: 20230913 - 20230919



Rainfall deficit of 20-80mm is expected in most parts of the country except Ilocos Norte, Benguet and most parts of Mindanao where 20-40mm increase of rainfall is more likely.

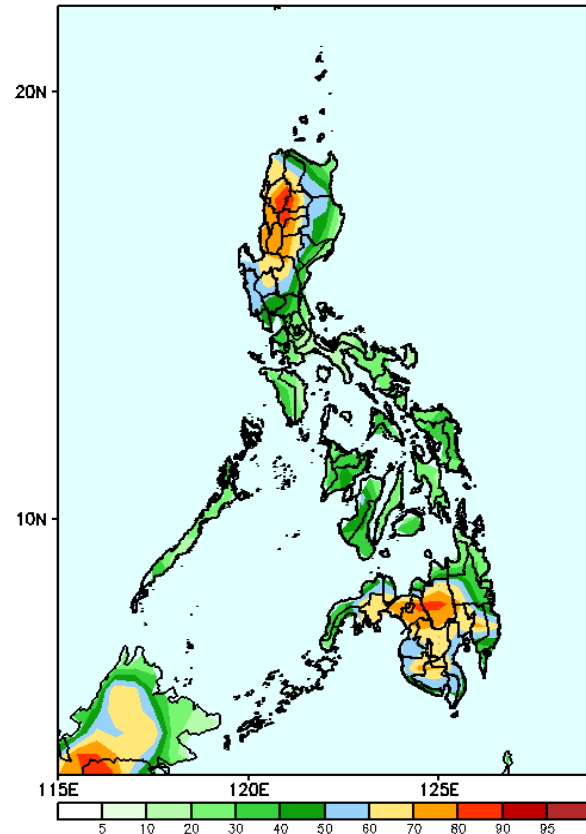
GEFS Week-2 Exceedance Prob. > 25mm
Valid: 20230913 - 20230919



Probability to Exceed 25mm

- High to very high in Northern and Central Luzon, Visayas, and Mindanao
- Moderate to high over the rest of the Luzon.

GEFS Week-2 Exceedance Prob. > 50mm
Valid: 20230913 - 20230919

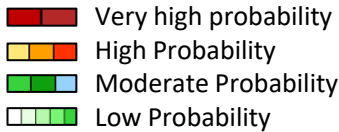


Probability to Exceed 50mm

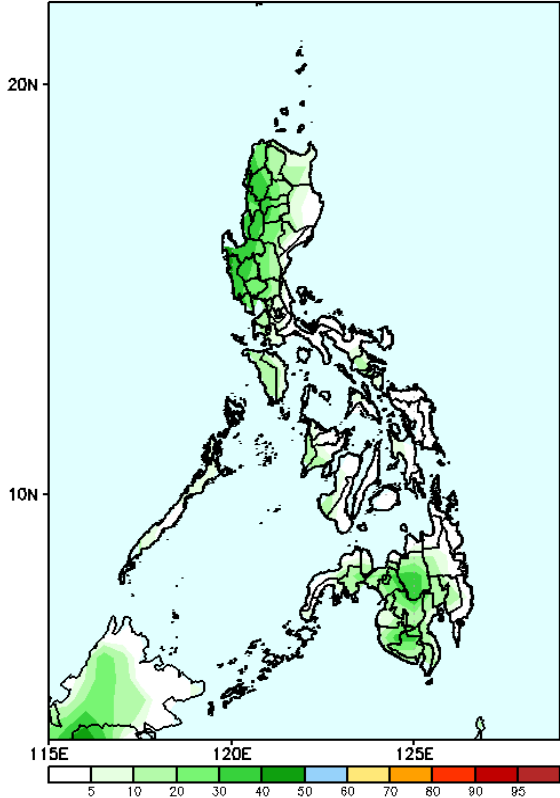
- Moderate to high over Ilocos Region, CAR, and most parts of Mindanao;
- Low to moderate over the rest of the country.

Exceedance Probability > 100/150/200 mm

Week 2: Sep 13-19, 2023

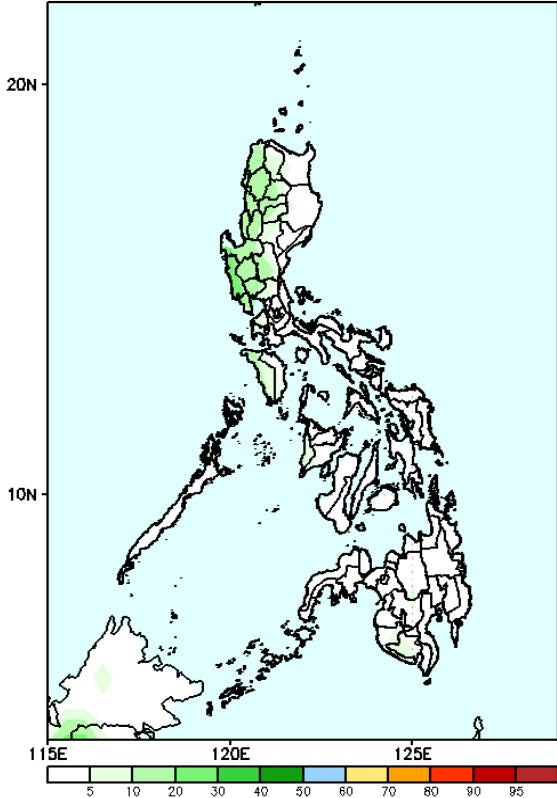


GEFS Week-2 Exceedance Prob. > 100mm
Valid: 20230913 – 20230919



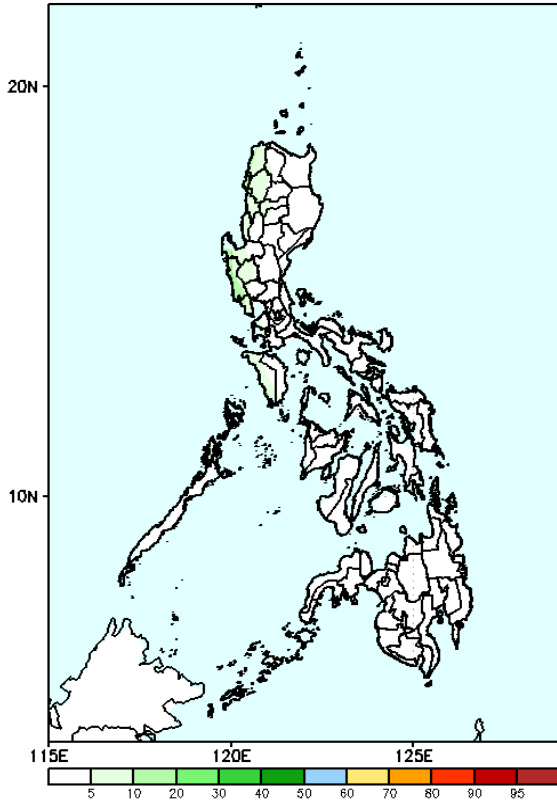
Probability to Exceed 100mm
• Low in most parts of the country.

GEFS Week-2 Exceedance Prob. > 150mm
Valid: 20230913 – 20230919



Probability to Exceed 150mm
• Low in most parts of the country.

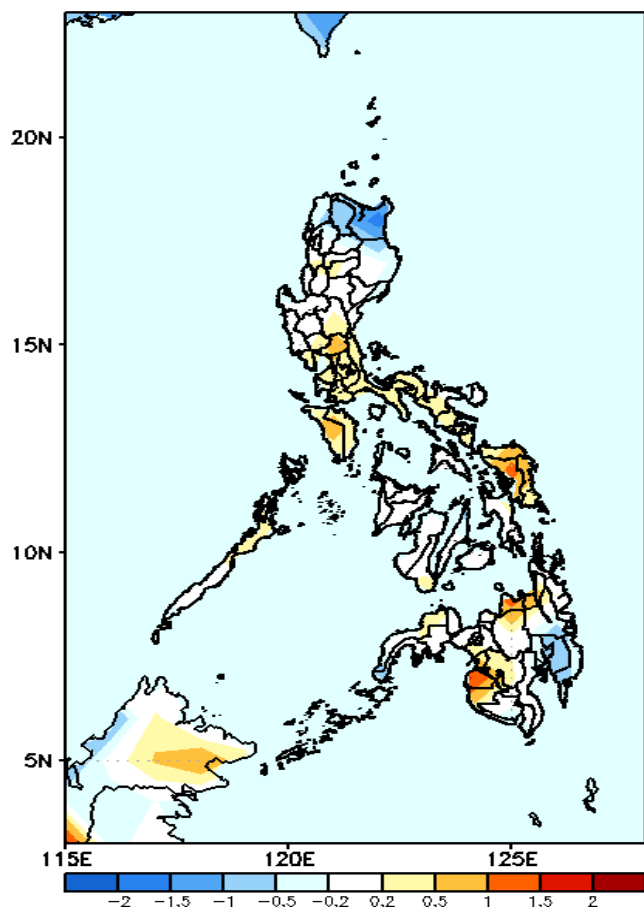
GEFS Week-2 Exceedance Prob. > 200mm
Valid: 20230913 – 20230919



Probability to Exceed 200mm
• Low in most parts of the country.

GEFS Week-1 & 2 Forecasts: T2m Anomaly

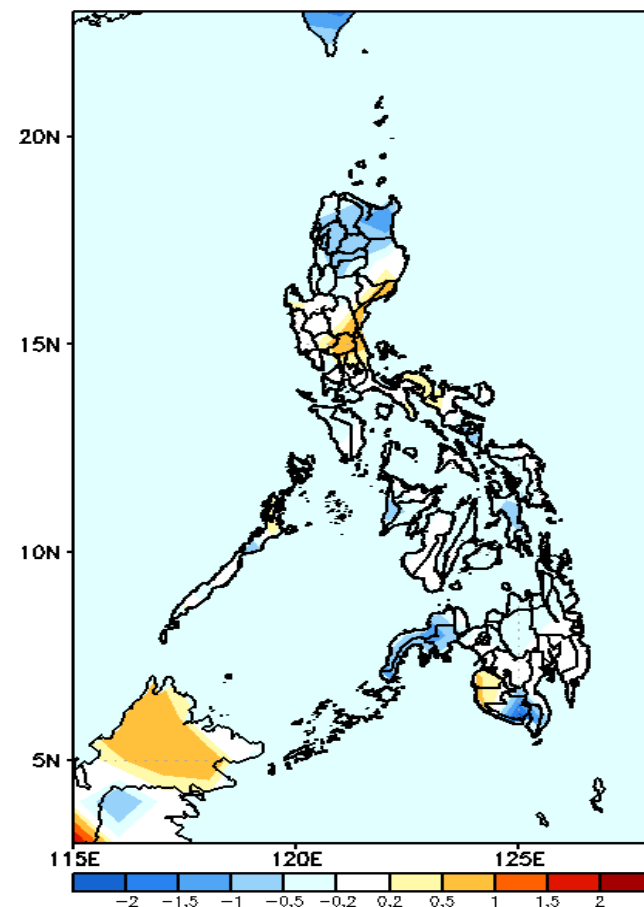
GEFS Week-1 T2m Anomaly
Valid: 20230906 – 20230912



2m Temperature Week 1: Sep 6-12, 2023

Average to warmer than average surface air temperature will likely experience in most parts of the country except in the northern portion of Northern Luzon and Davao region where slightly cooler to cooler than average temperature is expected.

GEFS Week-2 T2m Anomaly
Valid: 20230913 – 20230919



2m Temperature Week 2: Sep 13-19, 2023

Average to cooler than average surface air temperature will likely experience in most parts of the country except in eastern sections of Central Luzon, Camarines provinces, Sultan Kudarat and Maguindanao where slightly warmer than average temperature is expected.